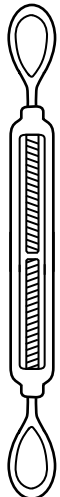


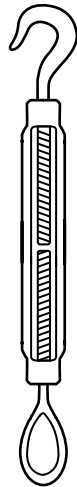


# TURNBUCKLES

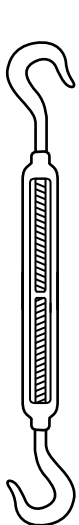
ACCORDING TO FEDERAL SPECIFICATION FF-T-79LB



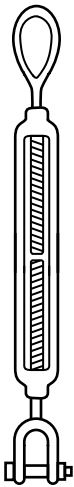
EYE & EYE



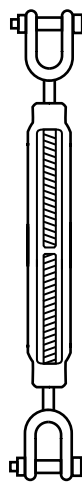
HOOK & EYE



HOOK & EYE



JAW & EYE



JAW & JAW

DIAMETER (A) AND TAKEUP (B) INCHES	AVERAGE OVERALL LENGTH (C) IN CLOSED POSITION INCHES	WEIGHT POUNDS EACH		
		WITH EYE OR HOOKS	JAW AND EYE	JAW AND JAW
1/4 x 4	8-1/4	0.31	0.33	0.35
5/16 x 4-1/2	9-9/16	0.50	0.53	0.58
3/8 x 6	11-7/8	0.79	0.86	0.93
1/2 x 6	13-5/16	1.42	1.54	1.66
9	16-5/16	1.83	1.95	2.07
12	19-5/16	2.01	2.19	2.37
5/8 x 6	15-1/2	2.61	2.81	3.02
9	18-1/2	2.81	3.01	3.22
12	21-1/2	3.12	3.32	3.53
18	28-1/8	6.00	6.20	6.40
3/4 x 6	17-1/16	3.60	3.87	4.18
9	20-1/8	4.69	4.98	5.27
12	23-1/16	5.07	5.36	5.65
18	29-1/16	6.21	6.51	6.81
7/8 x 12	24-5/8	8.10	8.75	9.40
18	30-5/8	9.93	10.60	11.20
1 x 6	20-5/8	8.75	9.15	9.50
12	26-5/8	10.40	11.20	12.10
18	32-5/8	13.20	14.10	14.90
24	38-5/8	15.90	16.80	17.60
1-1/4 x 12	29-7/8	19.00	20.50	22.00
18	35-7/8	23.40	24.90	26.40
24	41-7/8	27.80	29.30	30.90
1-1/2 x 12	32-3/8	26.10	28.20	30.30
18	38-3/8	37.50	39.60	41.80
24	44-3/8	43.10	45.20	47.30
36	58-3/4	52.60	54.80	57.00
1-3/4 x 18	41-3/4	45.00	48.80	52.40
24	47-3/4	52.20	56.00	59.60
2 x 24	51-3/4	89.80	94.60	100.00
2-1/2 x 24	58-1/2	140.00	150.00	161.00
2-3/4 x 24	61-1/2	194.00	200.00	216.00

HARDWARE

When Ordering Be Sure to Specify:  
 1st – Diameter of thread.  
 2nd – Length of take-up.  
 3rd – Self colored or galvanized.  
 4th – The type of end fittings desired.

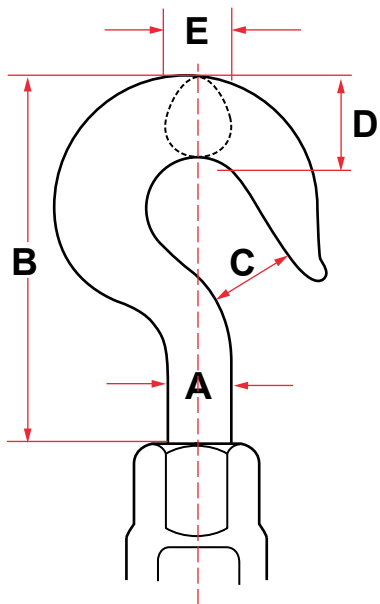
Larger sizes available per request.  
 Lock nuts available per request.  
 Jaw end fittings sizes 1/4" through 5/8" have bolts and nuts.  
 Jaw end fittings sizes 3/4" through 2-3/4" have pins and cotters.  
 Large jaw sizes available with bolts and nuts upon special request.



# HARDWARE

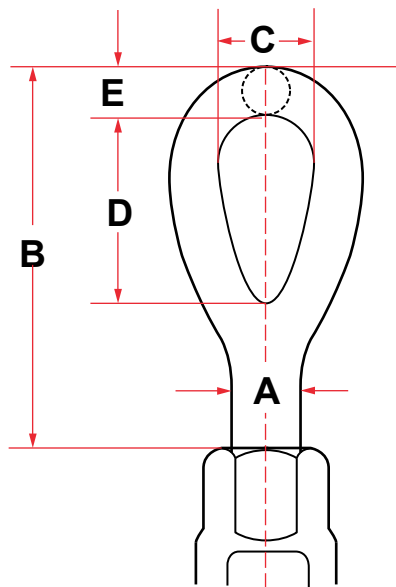
## TURNBUCKLES

### HOOK



DIMENSIONS (INCHES)					RATED LOAD (LBS.)
A	B	C	D	E	
1/4	1-5/8	7/16	3/8	1/4	400
5/16	1-29/32	1/2	7/16	5/16	700
3/8	2-9/32	9/16	17/32	3/8	1000
1/2	2-27/32	21/32	11/16	1/2	1500
5/8	3-17/32	27/32	27/32	5/8	2250
3/4	4-5/16	31/32	1	3/4	3000
7/8	5	1-1/8	1-3/16	7/8	4000
1	5-11/16	1-1/4	1-3/8	1	5000
1-1/4	6-29/32	1-1/2	1-1/2	1-1/16	6500
1-1/2	8-11/16	1-7/8	1-3/4	1-5/16	7500

### EYE



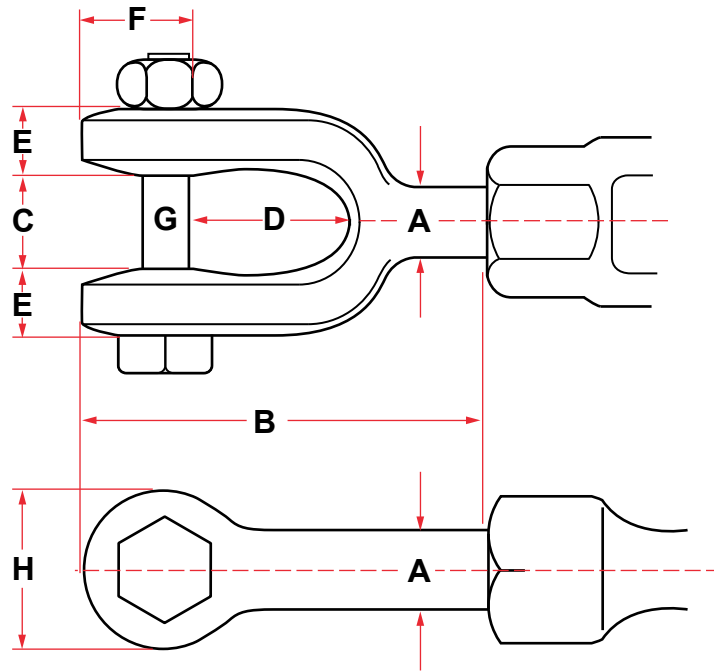
DIMENSIONS (INCHES)					RATED LOAD (LBS.)
A	B	C	D	E	
1/4	1-25/32	11/32	25/32	7/32	500
5/16	2-3/16	7/16	15/16	9/32	800
3/8	2-9/16	17/32	1-1/8	11/32	1200
1/2	3-7/32	23/32	1-7/16	7/16	2200
5/8	3-7/8	7/8	1-3/4	1/2	3500
3/4	4-11/16	1	2-1/8	5/8	5200
7/8	5-1/4	1-1/4	2-3/8	3/4	7200
1	6-3/8	1-7/16	3	7/8	10000
1-1/4	7-3/4	1-13/16	3-9/16	1-1/8	15200
1-1/2	8-5/8	2-1/8	4-1/8	1-1/4	21400
1-3/4	10	2-3/8	4-11/16	1-1/2	28000
2	12-1/8	2-11/16	5-3/4	1-3/4	37000
2-1/2	13-9/16	3-1/8	6-1/2	2	60000
2-3/4	15	3-1/4	7	2-1/4	75000

HARDWARE





**JAW**



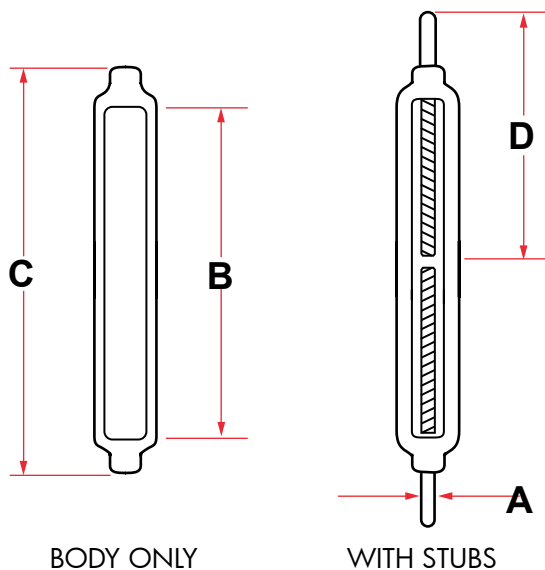
DIMENSIONS (INCHES)								RATED LOAD (LBS.)
A	B	C	D	E	F	G	H	
1/4	1-5/8	13/32	5/8	9/32	1/2	1/4	5/8	500
5/16	2	15/32	7/8	9/32	1/2	1/4	11/16	800
3/8	2-3/16	1/2	7/8	5/16	19/32	5/16	13/16	1200
1/2	2-3/4	5/8	1-1/16	13/32	3/4	3/8	1	2200
5/8	3-1/2	3/4	1-5/16	1/2	1-1/32	1/2	1-5/16	3500
3/4	4-1/8	15/16	1-1/2	9/16	1-9/32	5/8	1-5/8	5200
7/8	4-27/32	1-1/8	1-3/4	11/16	1-15/32	3/4	1-7/8	7200
1	5-17/32	1-3/16	2-1/16	25/32	1-21/32	7/8	2-1/8	10000
1-1/4	7-3/16	1-3/4	2-13/16	1	2-3/32	1-1/8	2-5/8	15200
1-1/2	7-7/8	2-1/16	2-13/16	1-1/16	2-15/32	1-3/8	3-1/8	21400
1-3/4	9-3/8	2-1/8	3-3/8	1-1/4	2-29/32	1-5/8	3-1/2	28000
2	10-7/8	2-1/2	3-11/16	1-9/16	3-17/32	2	4-3/16	37000
2-1/2	13-11/16	2-7/8	4-7/16	1-9/16	4-5/8	2-1/4	5-5/8	60000
2-3/4	15	3-1/2	4-3/16	1-5/8	5-3/8	2-3/4	6-1/2	75000

HARDWARE



# HARDWARE

## TURNBUCKLES



### DROP FORGED

WITH STUBS AND BODY ONLY

Meets Federal Specifications FF-T-7916

DIAMETER (A) AND TAKEUP (B) INCHES	DIAMETER (INCHES)		RATED LOAD (LBS.)	WEIGHT EACH ESTIMATED (LBS.)	
	C	D		BODY ONLY	WITH STUBS
1/4 x 4	4-3/4	5	500	0.15	0.28
5/16 x 4-1/2	5-7/16	6	800	0.19	0.39
3/8 x 6	7-1/8	8	1200	0.44	0.80
1/2 x 6	7-1/2	8	2200	0.78	1.50
1/2 x 9	10-1/2	9-1/2	2200	0.68	1.63
1/2 x 12	13-1/2	11	2200	0.85	1.90
5/8 x 6	8	8	3500	1.05	2.35
5/8 x 9	10-7/8	9-1/2	3500	1.18	2.63
5/8 x 12	13-7/8	11	3500	1.43	3.08
3/4 x 6	8-1/4	8-1/2	3500	1.60	3.60
3/4 x 9	11-1/4	9-1/2	5200	1.56	3.76
3/4 x 12	14-1/4	11	5200	2.08	4.68
3/4 x 18	20-1/4	14-1/2	5200	2.64	5.74
7/8 x 6	8-5/8	9	5200	2.25	5.25
7/8 x 12	14-5/8	11	5200	2.70	6.35
7/8 x 18	20-5/8	14-1/2	5200	3.80	8.30
1 x 6	9	9-1/2	7200	2.75	5.60
1 x 12	15	12-1/2	7200	3.93	8.93
1 x 18	21	15-1/2	7200	5.28	11.33
1 x 24	27	19	10000	7.38	14.53

Continued on next page...





# TURNBUCKLES

DIAMETER (A) AND TAKEUP (B) INCHES	DIAMETER (INCHES)			WEIGHT EACH ESTIMATED (LBS.)	
	C	D	RATED LOAD (LBS.)	BODY ONLY	WITH STUDS
1-1/8 x 6	9	9-1/2	12400	2.75	7.60
1-1/4 x 6	9-3/4	10	15200	5.00	11.50
1-1/4 x 12	15-1/8	13	15200	5.40	13.60
1-1/4 x 18	21-1/8	15-1/2	15200	8.25	18.15
1-1/4 x 24	27-1/8	19	15200	10.17	21.87
1-3/8 x 6	9-3/4	10-1/4	18000	5.97	13.87
1-1/2 x 6	10-1/2	10-1/4	21400	7.00	17.20
1-1/2 x 12	15-3/4	13	21400	8.44	20.44
1-1/2 x 18	21-3/4	16	21400	11.56	26.16
1-1/2 x 24	27-3/4	19	21400	13.69	31.69
1-5/8 x 6	10-1/2	10-1/2	25000	7.00	20.50
1-3/4 x 6	11-1/4	11	28000	11.00	25.00
1-3/4 x 18	22-3/8	17	28000	16.38	35.78
1-3/4 x 24	28-3/8	20	28000	21.25	49.90
1-7/8 x 6	12	11-1/2	32000	15.00	33.00
2 x 6	12	11-1/2	37000	15.00	35.00
2 x 24	29	20	37000	27.50	50.30
2-1/4 x 6	13-1/2	13	48000	25.00	49.00
2-3/8 x 6	13-1/2	13	54000	25.00	53.00
2-1/2 x 6	13-1/2	13	60000	25.00	57.00
2-1/2 x 24	31-1/2	21	60000	54.00	110.00
2-3/4 x 6	16-1/2	16	75000	50.00	90.00
2-3/4 x 24	31-1/2	22	75000	54.00	128.00
3 x 6	16-1/2	16	96000	50.00	105.00
3-1/4 x 6	16-1/2	16	122000	50.00	120.00
3-1/2 x 6	16-1/2	16	122000	60.00	135.00
4 x 6	18	17	167800	95.00	225.00
4-1/2 x 9	22-1/2	19	233800	155.00	325.00

**HARDWARE**